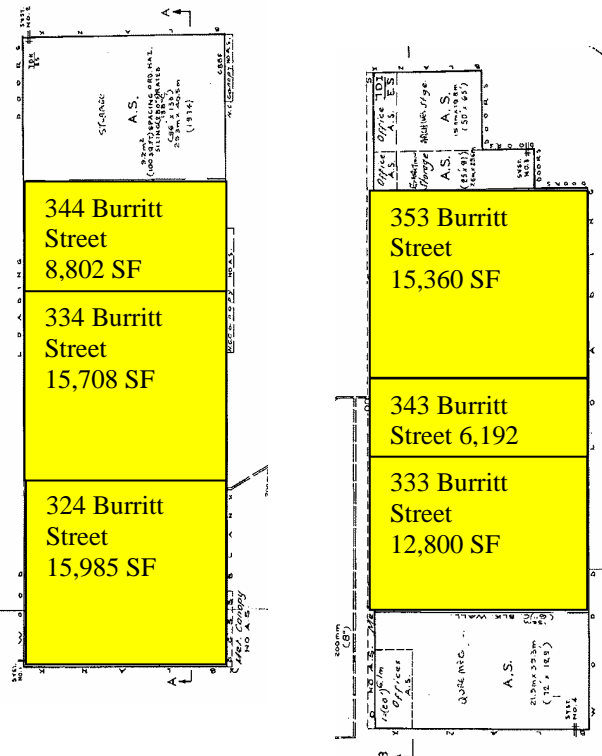
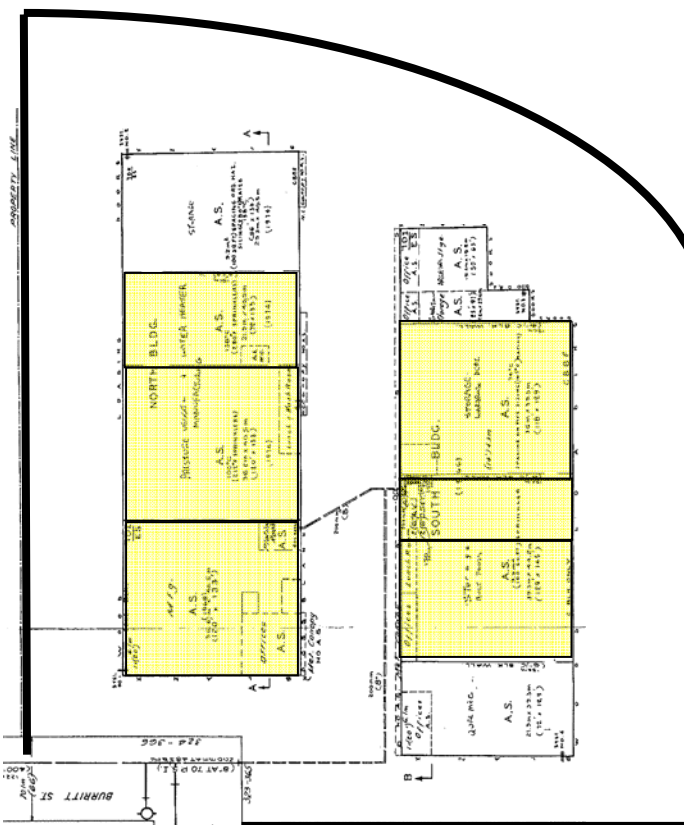


# Burritt Industrial Plaza



**\$3.25 PSF Net**  
**\$1.67 PSF TMI**  
 20' Clear Ceiling Height  
 1 Block From Truck Route  
 Units With Open Space (no offices)  
 Units With Offices  
 Available Space:  
 South Building  
 34,352 SF Contiguous  
 North Building  
 40,495 SF Contiguous  
 74,847 SF Total

## 323 and 324 Burritt Street, Stratford



Loading Docks Complete With Dock Levelers  
 Forced Air Gas Heat  
 Utilities Individually Metered  
 Sprinklered  
 24 Hour Monitored Fire Alarm

## JOHN WOLFE, Broker of Record

RE/MAX a-b Realty Ltd.  
 88 Wellington Street, Stratford, ON N5A 2L2  
 Office: 519.273.2821 Direct: 519.275.5001  
[www.stratfordhomes.ca](http://www.stratfordhomes.ca)